



# ACCESSORIES



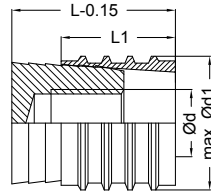
**rtc type BC**

Threadless Pressure Plug - Verschlussstopfen ohne Gewinde

Interchangeability - Austauschbar mit HASCO Z 942

1 - Material: MS58 Brass - Messing

2 - Material: Stainless Steel - Edelstahl



Order No / Bestellnr.	Ød	Ød1	L	L1	Package Pcs. Verpackungseinheit
BC - 06	M3	6	11.5	8	25
BC - 07	M3	7	11.5	8	25
BC - 08	M4	8	11.5	8	25
BC - 10	M6	10	14	10	25
BC - 12	M6	12	14	10	15
BC - 14	M8	14	17	12	15
BC - 15	M8	15	17	12	15
BC - 16	M8	16	17	12	15
BC - 20	M8	20	17	12	15

**rtc type BCO**

Threadless Pressure Plug - Verschlussstopfen ohne Gewinde

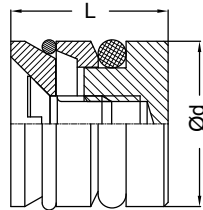
Interchangeability - Austauschbar mit EOC KN / 105

Material: MS58

Brass - Messing

O-Ring: Viton

Max. Temp: 200 °C

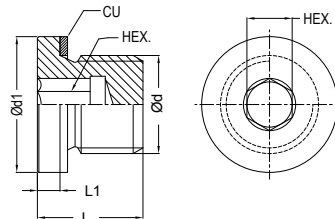


Order No / Bestellnr.	Ød	L	Package Pcs. Verpackungseinheit
BCO - 06	6	10	10
BCO - 07	7	10	10
BCO - 08	8	10	10
BCO - 8.5	8.5	10	10
BCO - 10	10	10	10
BCO - 10.5	10.5	10	10
BCO - 11	11	10	10
BCO - 11.5	11.5	10	10
BCO - 12	12	10	10
BCO - 14	14	10	10
BCO - 15	15	12	10
BCO - 16	16	12	10
BCO - 20	20	12	10
BCO - 23	23	12	10
BCO - 24	24	21.5	10
BCO - 25	25	21.5	10
BCO - 30	30	21.5	10

**rtc type PPD**

Pressure plugs with copper washer - Verschlussstopfen mit Kupferscheibe

Material: MS 58 (Brass) - Messing (DIN 908)



Order No / Bestellnr.	Ød	Ød1	L	L1	HEX.
PPD 10	BSP 1/8	14	11	3	5
PPD 13	BSP 1/4	18	15	3	6
PPD 17	BSP 3/8	22	15	3	8
PPD 21	BSP 1/2	24	18	4	10
PPD 26	BSP 3/4	32	20	5	12
PPD 33	BSP 1	39	21	5	17
PPD 1010	M10x1	14	11	3	5
PPD 1215	M12x1.5	17	15	3	6
PPD 1415	M14x1.5	19	15	3	6
PPD 1615	M16x1.5	21	15	3	8
PPD 2215	M22x1.5	27	18	4	10
PPD 2415	M24x1.5	30	18	4	12

## rtc TYPE NOP

Male threaded plastic hose nut / Aussengewinde Kunststoffschlauchmutter



Adapter / Nippel

Material: MS 58 (Brass) - Messing  
Plate: Nickel



Connection / Anschluss

Order No / Bestellnr.

HEX.

BSP 1/8 4x6 mm	NOP 10/06	14
BSP 1/8 6x8 mm	NOP 10/08	14
BSP 1/8 8x10 mm	NOP 10/10	14
BSP 1/4 4x6 mm	NOP 13/06	16
BSP 1/4 6x8 mm	NOP 13/08	16
BSP 1/4 8x10 mm	NOP 13/10	16
BSP 1/4 9x12 mm	NOP 13/12	16
BSP 3/8 4x6 mm	NOP 17/06	21
BSP 3/8 6x8 mm	NOP 17/08	21
BSP 3/8 8x10 mm	NOP 17/10	21
BSP 3/8 9x12 mm	NOP 17/12	21
BSP 1/2 6x8 mm	NOP 21/08	24
BSP 1/2 8x10 mm	NOP 21/10	24
BSP 1/2 9x12 mm	NOP 21/12	24

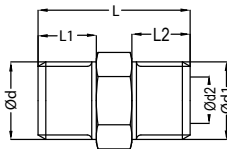
## rtc TYPE MMN

Male thread adapters with inner cone DIN 3863 / Aussengewinde Doppelnippel mit Innenkonus DIN 3863



Adapter / Nippel

Material: MS 58 (Brass) - Messing



Order No / Bestellnr.

Ød

Ød1

Ød2

L

L1

L2

HEX.

MMN 13-13	BSP 1/4	BSP 1/4	6	23	9	9	17
MMN 17-17	BSP 3/8	BSP 3/8	9	23	9	9	19
MMN 21-21	BSP 1/2	BSP 1/2	13	30	12	12	22
MMN 26-26	BSP 3/4	BSP 3/4	13	40	16	16	27
MMN 13-1415	BSP 1/4	M14x1.5	6	23	9	9	17
MMN 13-1615	BSP 1/4	M16x1.5	6	23	9	9	19
MMN 17-1415	BSP 3/8	M14x1.5	8	23	9	9	19
MMN 17-1615	BSP 3/8	M16x1.5	9	23	9	9	19
MMN 21-1415	BSP 1/2	M14x1.5	6	30	12	9	22
MMN 21-1615	BSP 1/2	M16x1.5	9	30	12	9	22
MMN 21-2415	BSP 1/2	M24x1.5	13	36	16	12	27
MMN 26-2415	BSP 3/4	M24x1.5	13	40	16	16	27
MMN 1415-1415	M14x1.5	M14x1.5	6	23	9	9	17
MMN 1615-1615	M16x1.5	M16x1.5	9	23	9	9	19
MMN 2415-2415	M24x1.5	M24x1.5	13	40	16	16	27
MMN 1415-1615	M14x1.5	M16x1.5	9	23	9	9	17
MMN 1415-1815	M14x1.5	M18x1.5	9	26	12	9	19
MMN 1615-1815	M16x1.5	M18x1.5	9	26	12	9	19

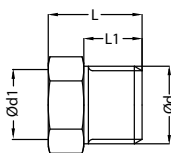
## rtc TYPE MFN

Male - Female thread adapters / Aussen - Innengewinde Adapter



Adapter / Nippel

Material: MS 58 (Brass) - Messing



Order No / Bestellnr.

Ød

Ød1

L

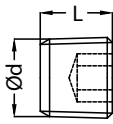
L1

HEX.

MFN 13-10	BSP 1/4	BSP 1/8	11	7	17
MFN 17-14	BSP 3/8	BSP 1/4	13	9	19
MFN 21-17	BSP 1/2	BSP 3/8	18	12	24
MFN 26-21	BSP 3/4	BSP 1/2	24	16	27
MFN 1415-1010	M14x1.5	M10x1	11	7	17
MFN 1815-1415	M18x1.5	M14x1.5	14	9	21
MFN 2415-1615	M24x1.5	M16x1.5	24	16	27

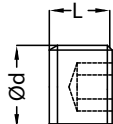
Pressure plug with conical thread DIN 906 / Verschlussstopfen mit konischem Gewinde DIN 906

TYPE PPR - PPK 

Pressure Plug / Verschlussstopfen	Order No / Bestellnr.	Ød	L	HEX.
Material: MS 58 (Brass) - Messing 	PPR 10	BSPT 1/8	8	5
	PPR 13	BSPT 1/4	10	7
	PPR 17	BSPT 3/8	10	8
	PPR 21	BSPT 1/2	10	10
	PPK 0875	M8x075	8	4
	PPK 1010	M10x1	8	5
	PPK 1215	M12x1.5	8	6
	PPK 1415	M14x1.5	10	7

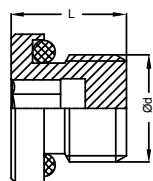
Pressure plug with parallel thread DIN 906 / Verschlussstopfen zylindrischem Gewinde DIN 906

TYPE PPG - PPM 

Pressure Plug / Verschlussstopfen	Order No / Bestellnr.	Ød	L	HEX.
Material: MS 58 (Brass) - Messing 	PPG 10	BSP 1/8	8	5
	PPG 13	BSP 1/4	10	7
	PPG 17	BSP 3/8	10	8
	PPG 21	BSP 1/2	10	10
	PPM 0875	M8x075	8	4
	PPM 1010	M10x1	8	5
	PPM 1215	M12x1.5	8	6
	PPM 1415	M14x1.5	10	7


Pressure plug with O-ring DIN 908 / Verschlussstopfen mit O-ring DIN 908

TYPE PPO 

Pressure Plug / Verschlussstopfen	Order No / Bestellnr.	Ød	L	INNER HEX.
Material: MS 58 (Brass) - Messing 	PPO 10	BSP 1/8	9	5
	PPO 13	BSP 1/4	14	6
	PPO 17	BSP 3/8	16	8
	PPO 21	BSP 1/2	18	10
	PPO 26	BSP 3/4	20	12
	PPO 33	BSP 1	22	14
	PPO 42	BSP 1-1/4	24	16
	PPO 48	BSP 1-1/2	26	18
	PPO 60	BSP 2	28	20


Hose Clamps / Schlauchschellen

TYPE CPW2 

Hose Clamps / Schlauchschellen	Order No / Bestellnr.	Hose Outer Diameter Range (mm) / (inch)		Quantity Pack
Material: Screw - DIN 1132 Zinc Plated Steel Housing - AISI 430 (DIN 1.4016 Stainless Steel) Band - AISI 430 (DIN 1.4016 Stainless Steel) 	CPW2 - 1016 - 09	10 - 16	3/8 - 5/8	100
	CPW2 - 1220 - 09	12 - 20	1/2 - 3/4	100
	CPW2 - 1222 - 09	12 - 22	1/2 - 7/8	100
	CPW2 - 1627 - 09	16 - 27	5/8 - 1-1/16	
	CPW2 - 2032 - 09	20 - 32	3/4 - 1-1/4	
	CPW2 - 2540 - 09	25 - 40	1 - 1-5/8	

Hose Clamps / Schlauchschellen

TYPE CPE 

Hose Clamps / Schlauchschellen	Order No / Bestellnr.	Hose Diameter (mm)	Quantity Pack
Material: W1 - DIN 1.0330 Mild Steel 	CPE - 1315	13-15	100
	CPE - 1417	14-17	100
	CPE - 1518	15-18	100
	CPE - 1720	17-20	100
	CPE - 1821	18-21	100

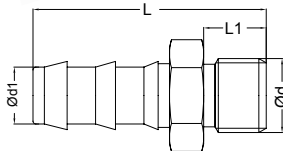
## rtc TYPE MHN

Male thread Push to connect hose connect / Aussengewinde Schnellsteck Schlauchtülle



Adapter / Nippel

Material: MS 58 (Brass) - Messing  
Plate: Nickel



Order No / Bestellnr.	Ød	Ød1	L	L1	HEX.
MHN 10-06 HT-1	BSP 1/8	6	39	7	14
MHN 10-10 HT-1	BSP 1/8	10	39	7	14
MHN 13-06 HT-1	BSP 1/4	6	39	9	17
MHN 13-10 HT-1	BSP 1/4	10	39	9	17
MHN 13-13 HT-1	BSP 1/4	13	39	9	17
MHN 17-10 HT-1	BSP 3/8	10	39	9	19
MHN 17-13 HT-1	BSP 3/8	13	43	9	19
MHN 21-10 HT-1	BSP 1/2	10	43	10	22
MHN 21-13 HT-1	BSP 1/2	13	43	10	22
MHN 21-16 HT-1	BSP 1/2	16	58	10	22
MHN 26-16 HT-1	BSP 3/4	16	62	16	27
MHN 26-19 HT-1	BSP 3/4	19	62	16	27
MHN 33-19 HT-1	BSP 1	19	69	19	35
MHN 1010-10 HT-1	M10x1	10	39	7	11
MHN 1415-13 HT-1	M14x1.5	13	39	9	15

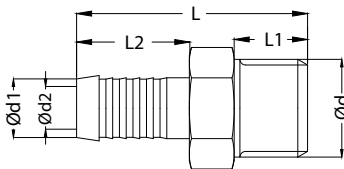
## rtc TYPE MHN

Male thread hose connect / Aussengewinde Schlauchtülle



Adapter / Nippel

Material: MS 58 (Brass) - Messing  
Plate: Nickel



Order No / Bestellnr.	Ød	Ød1	Ød2	L	L1	L2	HEX.
MHN 10-09 HT-2	BSP 1/8	9	6	33.5	7	22.5	11
MHN 13-09 HT-2	BSP 1/4	9	6	37.5	9	25	15
MHN 13-13 HT-2	BSP 1/4	13	8	40	9	22.5	15
MHN 17-09 HT-2	BSP 3/8	9	6	37.5	9	25	17
MHN 17-13 HT-2	BSP 3/8	13	9	40	9	25	17
MHN 21-19 HT-2	BSP 1/2	19	13	50	12	35	22
MHN 26-19 HT-2	BSP 3/4	19	13	56	16	35	27
MHN 1010-09 HT-2	M10x1	9	6	33.5	9	22.5	11
MHN 1215-13 HT-2	M12x1.5	13	7	40	9	25	15
MHN 1415-13 HT-2	M14x1.5	13	9	40	9	25	15
MHN 1615-13 HT-2	M16x1.5	13	9	40	9	25	17
MHN 2415-19 HT-2	M24x1.5	19	13	56	16	35	27

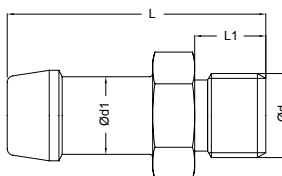
## rtc TYPE MHN

Male thread hose connect / Aussengewinde Schlauchtülle



Adapter / Nippel

Material: MS 58 (Brass) - Messing  
Plate: Nickel



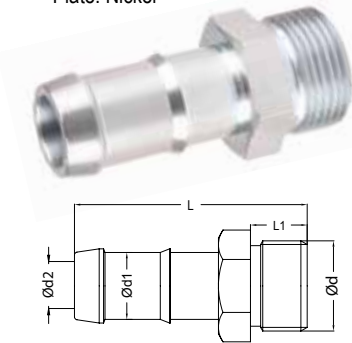
Order No / Bestellnr.	Ød	Ød1	L	L1	HEX.
MHN 10-04 HT6	BSP 1/8	4	38	8	14
MHN 10-06 HT6	BSP 1/8	6	38	8	14
MHN 10-08 HT6	BSP 1/8	8	43	8	14
MHN 10-10 HT6	BSP 1/8	10	43	8	14
MHN 13-06 HT6	BSP 1/4	6	41	11	17
MHN 13-08 HT6	BSP 1/4	8	46	11	17
MHN 13-09 HT6	BSP 1/4	9	46	11	17
MHN 13-10 HT6	BSP 1/4	10	46	11	17
MHN 13-13 HT6	BSP 1/4	13	51	11	17
MHN 17-08 HT6	BSP 3/8	8	47	12	19
MHN 17-10 HT6	BSP 3/8	10	47	12	19
MHN 17-13 HT6	BSP 3/8	13	52	12	19
MHN 17-16 HT6	BSP 3/8	16	52	12	18
MHN 21-13 HT6	BSP 1/2	13	54	14	23
MHN 21-16 HT6	BSP 1/2	16	54	14	23
MHN 26-16 HT6	BSP 3/4	16	58	16	23

Male thread hose connect / Aussengewinde Schlauchtülle

TYPE MHN **rtc**

Adapter / Nippel

Material: MS 58 (Brass) - Messing  
Plate: Nickel



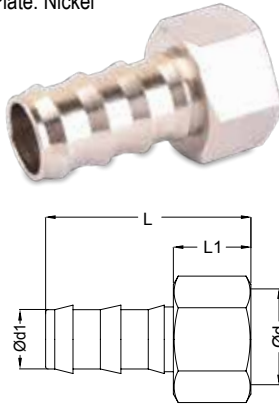
Order No / Bestellnr.	Ød	Ød1	Ød2	L	L1	HEX.
MHN 17-13 HT-8	BSP 3/8	13	9	59	12	19
MHN 17-16 HT-8	BSP 3/8	16	11	59	12	23
MHN 21-13 HT-8	BSP 1/2	13	9	61	14	23
MHN 21-16 HT-8	BSP 1/2	16	11	61	14	23
MHN 21-19 HT-8	BSP 1/3	19	11	61	14	23
MHN 26-19 HT-8	BSP 3/4	19	15	65	16	29
MHN 26-25 HT-8	BSP 3/4	25	19	80	16	35
MHN 33-19 HT-8	BSP 1	19	15	84	20	35
MHN 33-25 HT-8	BSP 1	25	19	84	20	35

Female thread Push to connect hose connect / Innengewinde Schnellsteck Schlauchtülle

TYPE FHN **rtc**

Adapter / Nippel

Material: MS 58 (Brass) - Messing  
Plate: Nickel



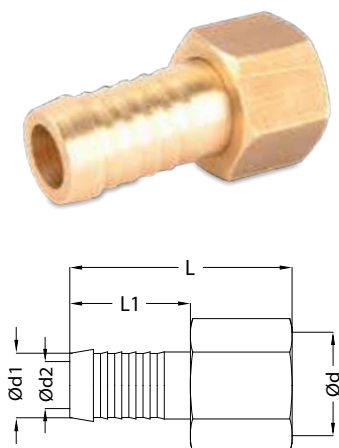
Order No / Bestellnr.	Ød	Ød1	L	L1	HEX.
FHN 10-06 HT-1	BSP 1/8	6	36	12	14
FHN 10-10 HT-1	BSP 1/8	10	36	12	14
FHN 13-06 HT-1	BSP 1/4	6	40	16	17
FHN 13-10 HT-1	BSP 1/4	10	40	16	17
FHN 13-13 HT-1	BSP 1/4	13	44	16	17
FHN 17-10 HT-1	BSP 3/8	10	40	16	20
FHN 17-13 HT-1	BSP 3/8	13	44	16	20
FHN 21-10 HT-1	BSP 1/2	10	41	17	24
FHN 21-13 HT-1	BSP 1/2	13	45	17	24
FHN 21-16 HT-1	BSP 1/2	16	55	17	24
FHN 26-16 HT-1	BSP 3/4	16	67	19	30
FHN 26-19 HT-1	BSP 3/4	19	67	19	30
FHN 1010-10 HT-1	M10x1	10	36	12	14
FHN 1415-13 HT-1	M14x1.5	13	40	16	17

Female thread Push to connect hose connect / Innengewinde Schnellsteck Schlauchtülle

TYPE FHN **rtc**

Adapter / Nippel

Material: MS 58 (Brass) - Messing

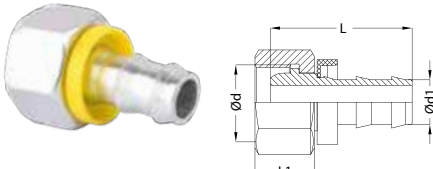


Order No / Bestellnr.	Ød	Ød1	Ød2	L	L1	HEX.
FHN 10-06 HT2	BSP 1/8	6	4.5	28	17	12
FHN 10-08 HT2	BSP 1/8	8	6.5	28	17	12
FHN 13-06 HT2	BSP 1/4	6	4.5	28.5	17	17
FHN 13-08 HT2	BSP 1/4	8	6.5	28.5	17	17
FHN 13-10 HT2	BSP 1/4	10	8	34	22.5	17
FHN 13-13 HT2	BSP 1/4	13	10	37	25	17
FHN 17-08 HT2	BSP 3/8	8	6.5	30	17	19
FHN 17-10 HT2	BSP 3/8	10	8	35	22.5	19
FHN 17-13 HT2	BSP 3/8	13	10	38	25	19
FHN 21-10 HT2	BSP 1/2	10	8	38	22.5	24
FHN 21-13 HT2	BSP 1/2	13	10	41	25	24
FHN 21-16 HT2	BSP 1/2	16	13	41	25	24
FHN 26-16 HT2	BSP 3/4	16	13	41	25	30
FHN 26-19 HT2	BSP 3/4	19	16	48	32	30
FHN 1415-09 HT2	M14x1.5	9	7	36	22.5	17
FHN 1415-13 HT2	M14x1.5	13	10	38.5	25	17
FHN 1615-09 HT2	M16x1.5	9	7	36	22.5	19
FHN 1615-13 HT2	M16x1.5	13	10	38.5	25	19
FHN 2415-19 HT2	M24x1.5	19	15	55	32	30

## rtc TYPE SPN

Female thread swivel adapter nipple / Nippel mit Innengewinde Schwenkadapter

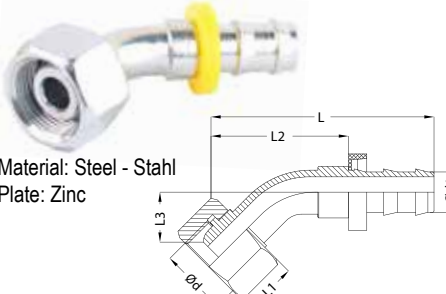


Adapter / Nippel	Size Größe	Order No / Bestellnr.	Ød	Ød1	L	L1	HEX.
Material: Steel - Stahl Plate: Zinc 	6	SPN 1215-06	M12x1.5	1/4 - 6.3	33	14.5	14
	6	SPN 1415-06	M14x1.5	1/4 - 6.3	33	14.5	17
	10	SPN 1615-10	M16x1.5	3/8 - 9.5	38	15.5	19
	10	SPN 1815-10	M18x1.5	3/8 - 9.5	38	15.5	22
	12	SPN 2215-13	M22x1.5	1/2 - 12.7	42	17	27
	16	SPN 2615-16	M26x1.5	5/8 - 15.9	53	18	32
	20	SPN 3020-19	M30x2.0	3/4 - 19.1	53	20	36
25	SPN 3620-25	M36x2.0	1 - 25.4	58	21	41	

## rtc TYPE SPN

Female thread swivel adapter nipple 90° / Nippel mit Innengewinde Schwenkadapter 90°

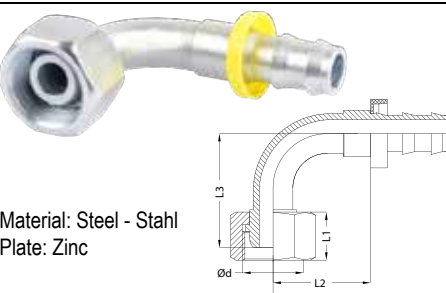


Adapter / Nippel	Size Größe	Order No / Bestellnr.	Ød	Ød1	L	L1	L2	L3	HEX.
Material: Steel - Stahl Plate: Zinc 	6	SPN 1215-06-45	M12x1.5	1/4 - 6.3	51	14.5	32	16	14
	6	SPN 1415-06-45	M14x1.5	1/4 - 6.3	51	14.5	32	16	17
	10	SPN 1615-10-45	M16x1.5	3/8 - 9.5	58	15.5	35	18	19
	10	SPN 1815-10-45	M18x1.5	3/8 - 9.5	59	15.5	36	18	22
	12	SPN 2215-13-45	M22x1.5	1/2 - 12.7	68	17	45	19	27
	16	SPN 2615-16-45	M26x1.5	5/8 - 15.9	81	18	45	21	32
	20	SPN 3020-19-45	M30x2.0	3/4 - 19.1	89	20	52	23	36
25	SPN 3620-25-45	M36x2.0	1 - 25.4	105	21	67	30	41	

## rtc TYPE SPN

Female thread swivel adapter nipple 90° / Nippel mit Innengewinde Schwenkadapter 90°




Adapter / Nippel	Size Größe	Order No / Bestellnr.	Ød	Ød1	L	L1	L2	L3	HEX.
Material: Steel - Stahl Plate: Zinc 	6	SPN 1215-06-90	M12x1.5	1/4 - 6.3	33	14.5	23	29	14
	6	SPN 1415-06-90	M14x1.5	1/4 - 6.3	33	14.5	23	29	17
	10	SPN 1615-10-90	M16x1.5	3/8 - 9.5	38	15.5	27	31	19
	10	SPN 1815-10-90	M18x1.5	3/8 - 9.5	38	15.5	27	34	22
	12	SPN 2215-13-90	M22x1.5	1/2 - 12.7	42	17	34	39	27
	16	SPN 2615-16-90	M26x1.5	5/8 - 15.9	53	18	37	43	32
	20	SPN 3020-19-90	M30x2.0	3/4 - 19.1	53	20	51	50	36
25	SPN 3620-25-90	M36x2.0	1 - 25.4	58	21	61	70	41	

## rtc TYPE MRN

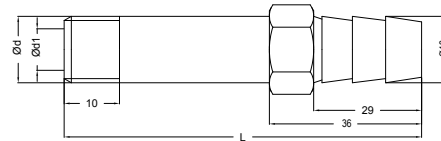
Male Metric with inner cone 60° to BSPT adapter - Verschraubung Metrisch Innenkonus 60°/ BSPT Aussengewinde



Adapter / Nippel	Order No / Bestellnr.	Ød	Ød1	Ød2	L	HEX.
Material: Steel - Stahl Plate: Zinc 	MRN 10-1210-06	M12x1.0	BSPT 1/8	6	21	14
	MRN 13-1210-06	M12x1.0	BSPT 1/4	6	26	14
	MRN 10-1215-06	M12x1.5	BSPT 1/8	6	26	14
	MRN 13-1215-06	M12x1.5	BSPT 1/4	6	30	14
	MRN 13-1415-08	M14x1.5	BSPT 1/4	8	30	17
	MRN 17-1415-08	M14x1.5	BSPT 3/8	8	30	19
	MRN 17-1615-10	M16x1.5	BSPT 3/8	10	30	19
	MRN 21-1615-10	M16x1.5	BSPT 1/2	10	33	24
	MRN 17-1815-12	M18x1.5	BSPT 3/8	12	31	19
	MRN 21-1815-12	M18x1.5	BSPT 1/2	12	38	24
	MRN 17-2215-15	M22x1.5	BSPT 3/8	15	33	24
	MRN 21-2215-15	M22x1.5	BSPT 1/2	15	35	24
	MRN 26-2615-18	M26x1.5	BSPT 3/4	18	38	27
	MRN 33-3020-22	M30x2.0	BSPT 1	22	54	35
MRN 42-3620-26	M36x2.0	BSPT 1-1/4	26	58	46	

## rtc TYPE SRM / SRG

Extension Plugs / Erweiterung Nippels



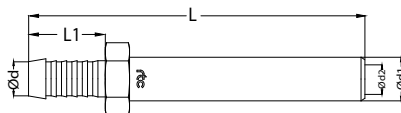
Order No / Bestellnr.	Ød	Ød1	L	HEX.
SRM 08 x 38	M 8x1.25	5	38	13
SRM 08 x 60	M 8x1.25	5	60	13
SRM 08 x 80	M 8x1.25	5	80	13
SRM 08 x 100	M 8x1.25	5	100	13
SRM 10 x 38	M 10x1.5	6	38	13
SRM 10 x 60	M 10x1.5	6	60	13
SRM 10 x 80	M 10x1.5	6	80	13
SRM 10 x 100	M 10x1.5	6	100	13
SRM 10 x 120	M 10x1.5	6	120	13
SRM 10 x 150	M 10x1.5	6	150	13
SRM 12 x 38	M 12x1.75	7	38	13
SRM 12 x 60	M 12x1.75	7	60	13
SRM 12 x 80	M 12x1.75	7	80	13
SRM 12 x 100	M 12x1.75	7	100	13
SRM 12 x 120	M 12x1.75	7	120	13
SRM 12 x 150	M 12x1.75	7	150	13
SRM 14 x 38	M 14x2.0	7	38	14

Order No / Bestellnr.	Ød	Ød1	L	HEX.
SRG 10 x 38	BSP 1/8	6	38	13
SRG 10 x 60	BSP 1/8	6	60	13
SRG 10 x 80	BSP 1/8	6	80	13
SRG 10 x 100	BSP 1/8	6	100	13
SRG 10 x 120	BSP 1/8	6	120	13
SRG 10 x 150	BSP 1/8	6	150	13
SRG 13 x 38	BSP 1/4	8	38	14
SRG 13 x 60	BSP 1/4	8	60	14
SRG 13 x 80	BSP 1/4	8	80	14
SRG 13 x 100	BSP 1/4	8	100	14
SRG 13 x 120	BSP 1/4	8	120	14
SRG 13 x 150	BSP 1/4	8	150	14

## rtc TYPE FHE

Extension hose stems / Schlauchtülleverlängerung

Adapter / Nippel



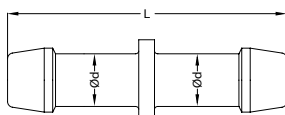
Order No / Bestellnr.	Ød	Ød1	Ød2	L	L1	HEX.
FHE 9-120 HT2	10	9	6	120	22.5	11
FHE 13-150 HT2	14	13	9	150	25	15

## rtc TYPE HHN

Hose to Hose adapter

Adapter / Nippel

Material: MS 58 (Brass) - Messing



Order No / Bestellnr.	Ød	L
HHN 04 HT-6	4	50
HHN 06 HT-6	6	50
HHN 08 HT-6	8	50
HHN 09 HT-6	9	50
HHN 10 HT-6	10	50
HHN 13 HT-6	13	58
HHN 16 HT-6	16	58
HHN 19 HT-6	19	75
HHN 25 HT-6	25	85

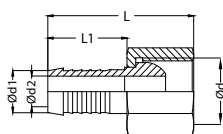
## rtc TYPE FHNN

Standard hose connection with outer cone DIN 3863 and hex nut  
Standard Schlauchtülle mit Überwurfmutter - Nippel mit Außenkonus DIN 3863

Adapter / Nippel

Material: MS 58 (Brass) - Messing

Plate: Nickel



Order No / Bestellnr.	Ød	Ød1	Ød2	L	L1	HEX.
FHNN 13-09 HT2	BSP 1/4	9	6	40	22.5	17
FHNN 17-13 HT2	BSP 3/8	13	9	41	22.5	21
FHNN 26-19 HT2	BSP 3/4	19	13	52	32	32
FHNN 1415-09 HT2	M14x1.5	9	6	40	22.5	17
FHNN 1615-13 HT2	M16x1.5	13	9	41	22.5	21
FHNN 2415-19 HT2	M24x1.5	19	13	52	32	30



Elbow 90° / Winkel 90°

TYPE **EBFM 90** **rtc**

Adapter / Nippel

Order No / Bestellnr.

Connection / Anschluss

Male  
Aussengewinde

Female  
Innengewinde



EBFM 10 - 90	BSP 1/8	BSP 1/8
EBFM 13 - 90	BSP 1/4	BSP 1/4
EBFM 17 - 90	BSP 3/8	BSP 3/8
EBFM 21 - 90	BSP 1/2	BSP 1/2
EBFM 26 - 90	BSP 3/4	BSP 3/4
EBFM 33 - 90	BSP 1	BSP 1
EBFM 42 - 90	BSP 1-1/4	BSP 1-1/4
EBFM 48 - 90	BSP 1-1/2	BSP 1-1/2
EBFM 60 - 90	BSP 2	BSP 2



Elbow 45° / Winkel 45°

TYPE **EBFM 45** **rtc**

Adapter / Nippel

Order No / Bestellnr.

Connection / Anschluss

Male  
Aussengewinde

Female  
Innengewinde



EBFM 10 - 45	BSP 1/8	BSP 1/8
EBFM 13 - 45	BSP 1/4	BSP 1/4
EBFM 17 - 45	BSP 3/8	BSP 3/8
EBFM 21 - 45	BSP 1/2	BSP 1/2
EBFM 26 - 45	BSP 3/4	BSP 3/4
EBFM 33 - 45	BSP 1	BSP 1
EBFM 42 - 45	BSP 1-1/4	BSP 1-1/4
EBFM 48 - 45	BSP 1-1/2	BSP 1-1/2
EBFM 60 - 45	BSP 2	BSP 2



Male - Female thread adapters (90°) / Außen - Innengewinde Adapter (90°)

TYPE **ELB** **rtc**

Adapter / Nippel

Order No / Bestellnr.

Ød

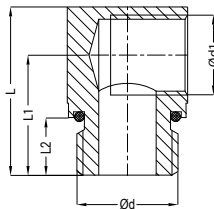
Ød1

L

L1

L2

#



Material: MS 58 (Brass) - Messing  
Plate: Nickel



ELB 13-10	BSP 1/4	BSP 1/8	25	17	9	15
ELB 17-13	BSP 3/8	BSP 1/4	27.5	19	9	20
ELB 21-17	BSP 1/2	BSP 3/8	35	25	15	25



Male - Hose adapters (90°) / Aussengewinde Schauchanschluss Adapter (90°)

TYPE **ELB** **rtc**

Adapter / Nippel

Order No / Bestellnr.

Ød

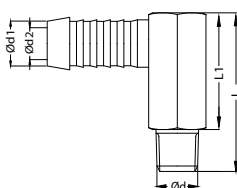
Ød1

Ød2

L

L1

HEX.



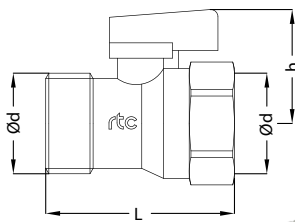
MHN 10-09 HT-2 90	BSPT 1/8	9	6	27	20	15
MHN 13-13 HT-2 90	BSPT 1/4	13	9	34	24	17
MHN 21-19 HT-2 90	BSPT 1/2	19	13	47	32	24
MHN 0875-09 HT-2 90	M8x0.75	9	4.5	27	20	15
MHN 1010-09 HT-2 90	M10x1	9	6	27	20	15
MHN 1415-13 HT-2 90	M14x1.5	13	9	34	24	17
MHN 2415-19 HT-2 90	M24x1.5	19	13	47	32	24

## rtc TYPE KVFM

Mini ball valve with female to male connection / Kugelventil



Mini Ball Valve / Mini Kugelventil



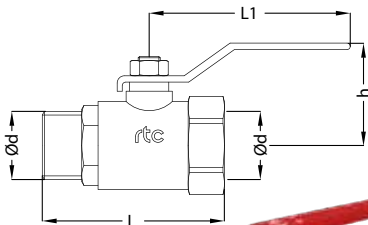
Connection / Anschluss		Order No / Bestellnr.		L	h	Bar
Ød Female	Ød Male	Red / Rot	Blue/ Blau			
BSP 1/4		KVFM 13-R	KVFM 13-B	38	30	16
BSP 3/8		KVFM 17-R	KVFM 17-B	38	30	16
BSP 1/2		KVFM 21-R	KVFM 21-B	41	32	16
BSP 3/4		KVFM 26-R	KVFM 26-B	51	32	16

## rtc TYPE SVFM

Standard ball valve with female to male connection / Kugelventil



Standard Ball Valve / Standart Kugelventil



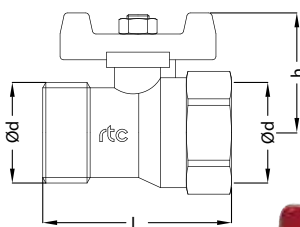
Connection / Anschluss		Order No / Bestellnr.		L	L1	h	Bar
Ød Female	Ød Male	Red / Rot	Blue/ Blau				
BSP 1/4		SVFM 13-R	SVFM 13-B	57	109	35	25
BSP 3/8		SVFM 17-R	SVFM 17-B	57	109	35	25
BSP 1/2		SVFM 21-R	SVFM 21-B	65	109	44	25
BSP 3/4		SVFM 26-R	SVFM 26-B	72	109	47	25
BSP 1		SVFM 33-R	SVFM 33-B	86	119	52	25
BSP 1-1/4		SVFM 42-R	SVFM 42-B	102	137	57	25
BSP 1-1/2		SVFM 48-R	SVFM 48-B	110	162	73	25

## rtc TYPE TVFM

T Handle ball valve with female to male connection / Kugelventil



Standard Ball Valve / Standart Kugelventil



Connection / Anschluss		Order No / Bestellnr.		L	h	Bar
Ød Female	Ød Male	Red / Rot	Blue/ Blau			
BSP 1/4		TVFM 13-R	TVFM 13-B	57	37	25
BSP 3/8		TVFM 17-R	TVFM 17-B	57	37	25
BSP 1/2		TVFM 21-R	TVFM 21-B	65	41	25
BSP 3/4		TVFM 26-R	TVFM 26-B	72	44	25
BSP 1		TVFM 33-R	TVFM 33-B	86	53	25
BSP 1-1/4		TVFM 42-R	TVFM 42-B	102	58	25

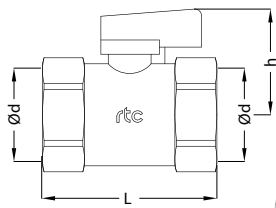


Mini ball valve with female to female connection / Kugelventil

TYPE KVFF



Mini Ball Valve / Mini Kugelventil



Connection / Anschluss		Order No / Bestellnr.		L	h	Bar
Ød Female	Ød Female	Red / Rot	Blue/ Blau			
BSP 1/4		KVFF 13-R	KVFF 13-B	38	30	16
BSP 3/8		KVFF 17-R	KVFF 17-B	38	30	16
BSP 1/2		KVFF 21-R	KVFF 21-B	41	32	16
BSP 3/4		KVFF 26-R	KVFF 26-B	51	32	16

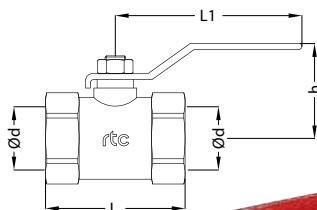


Standard ball valve with female to female connection / Kugelventil

TYPE SVFF



Standard Ball Valve / Standart Kugelventil



Connection / Anschluss		Order No / Bestellnr.		L	L1	h	Bar
Ød Female	Ød Female	Red / Rot	Blue/ Blau				
BSP 1/4		SVFF 13-R	SVFF 13-B	49	109	48	25
BSP 3/8		SVFF 17-R	SVFF 17-B	49	109	48	25
BSP 1/2		SVFF 21-R	SVFF 21-B	58	109	48	25
BSP 3/4		SVFF 26-R	SVFF 26-B	68	109	51	25
BSP 1		SVFF 33-R	SVFF 33-B	83	119	57	25
BSP 1-1/4		SVFF 42-R	SVFF 42-B	98	137	64	25
BSP 1-1/2		SVFF 48-R	SVFF 48-B	109	162	74	25

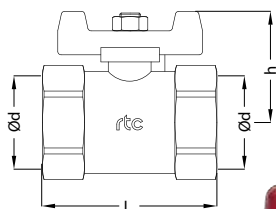


T Handle ball valve with female to male connection / Kugelventil

TYPE TVFF



Standard Ball Valve / Standart Kugelventil



Connection / Anschluss		Order No / Bestellnr.		L	h	Bar
Ød Female	Ød Female	Red / Rot	Blue/ Blau			
BSP 1/4		TVFF 13-R	TVFF 13-B	49	37	25
BSP 3/8		TVFF 17-R	TVFF 17-B	49	37	25
BSP 1/2		TVFF 21-R	TVFF 21-B	58	41	25
BSP 3/4		TVFF 26-R	TVFF 26-B	68	44	25
BSP 1		TVFF 33-R	TVFF 33-B	83	53	25
BSP 1-1/4		TVFF 42-R	TVFF 42-B	98	60	25